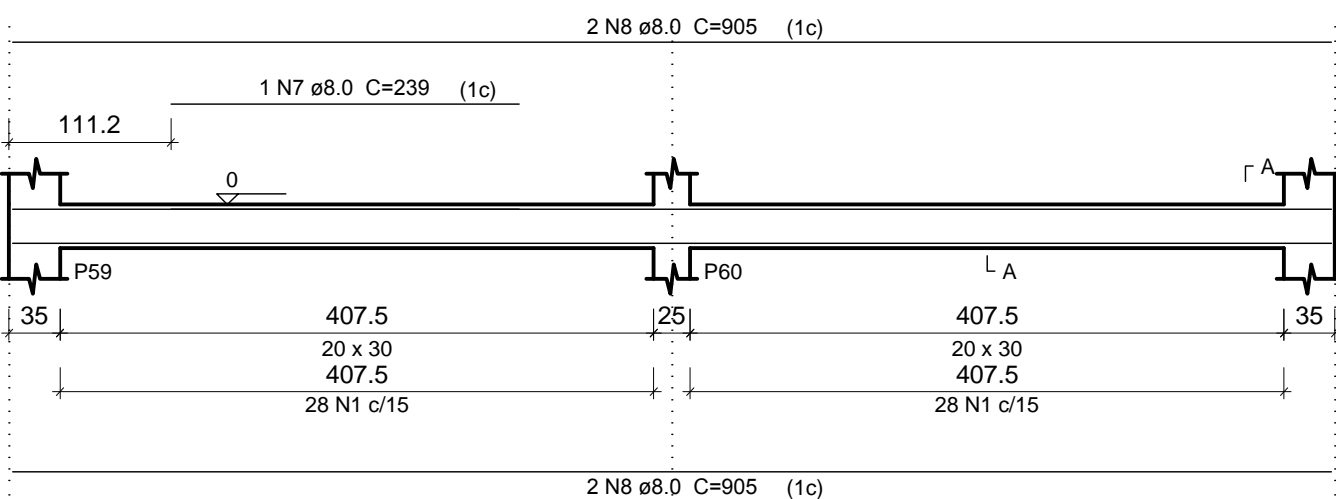


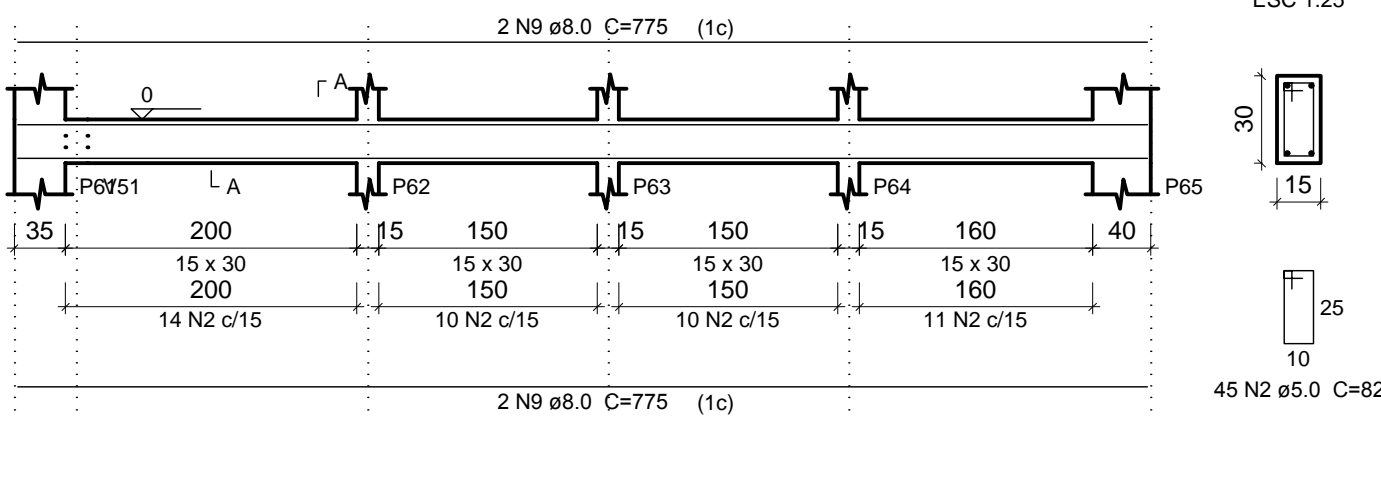
### V27 (20 x 30)

ESC 1:50



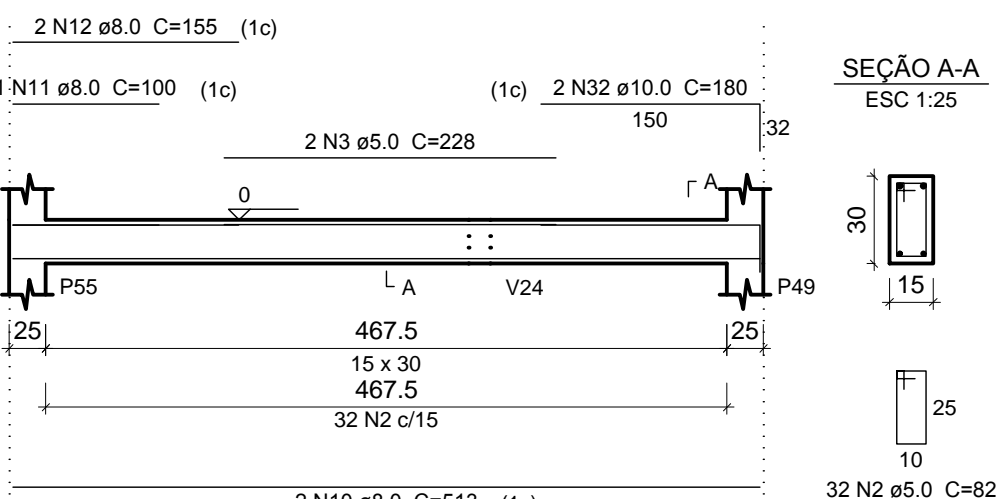
### V28 (15 x 30)

ESC 1:50



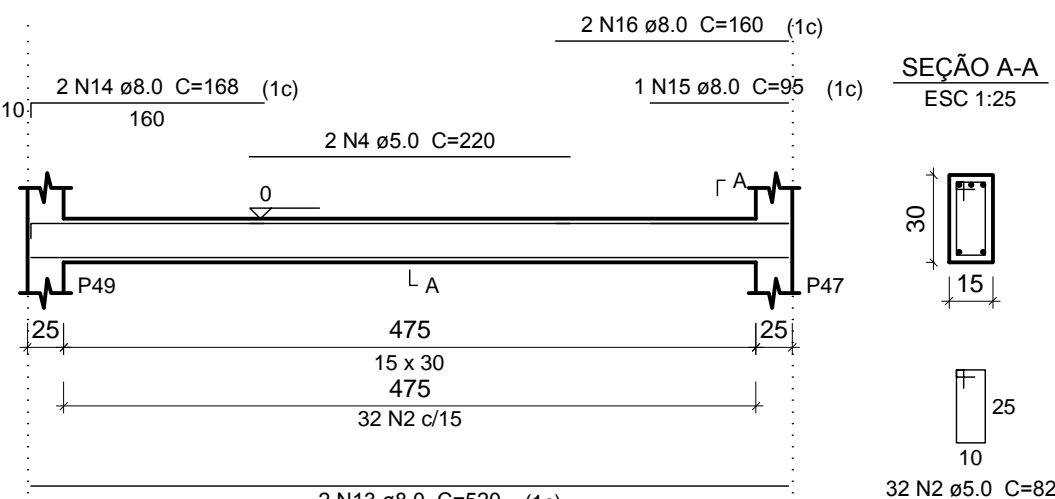
### V29 (15 x 30)

ESC 1:50



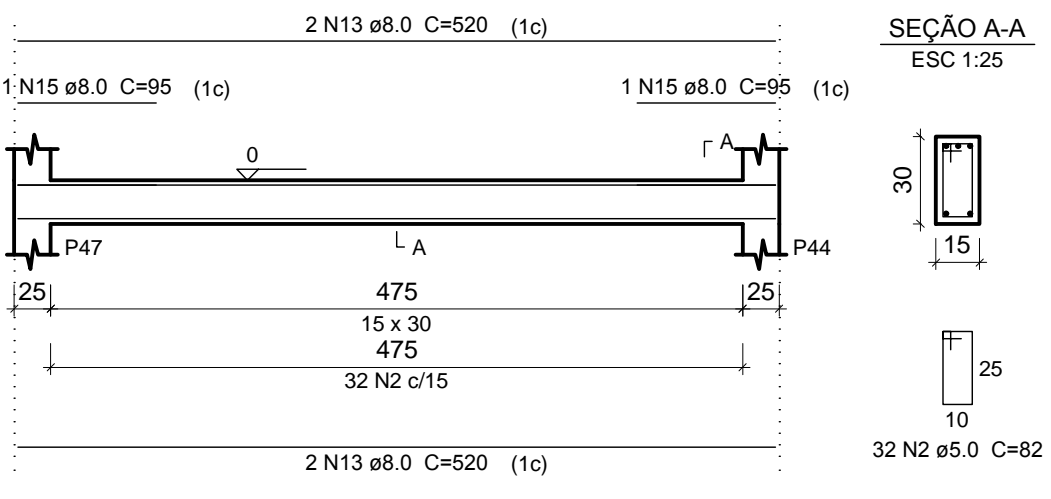
### V30 (15 x 30)

ESC 1:50



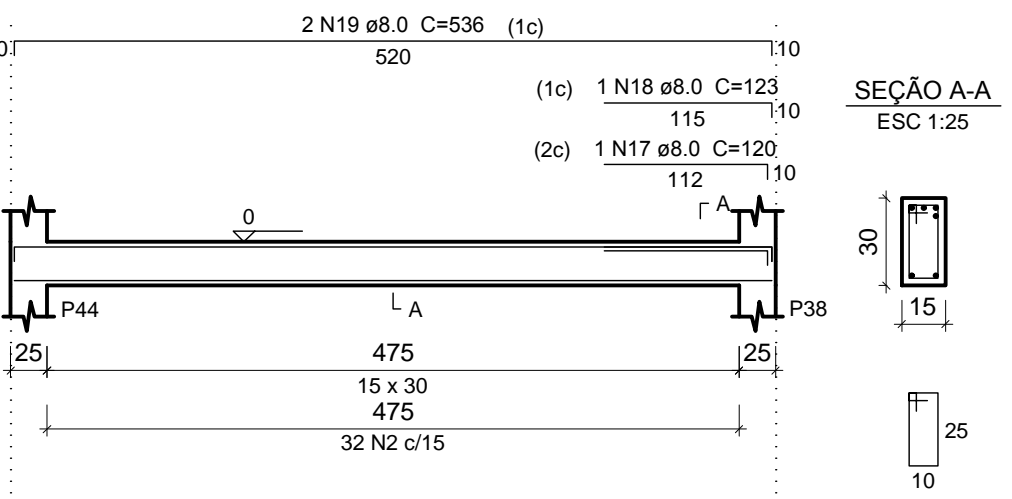
### V31 (15 x 30)

ESC 1:50



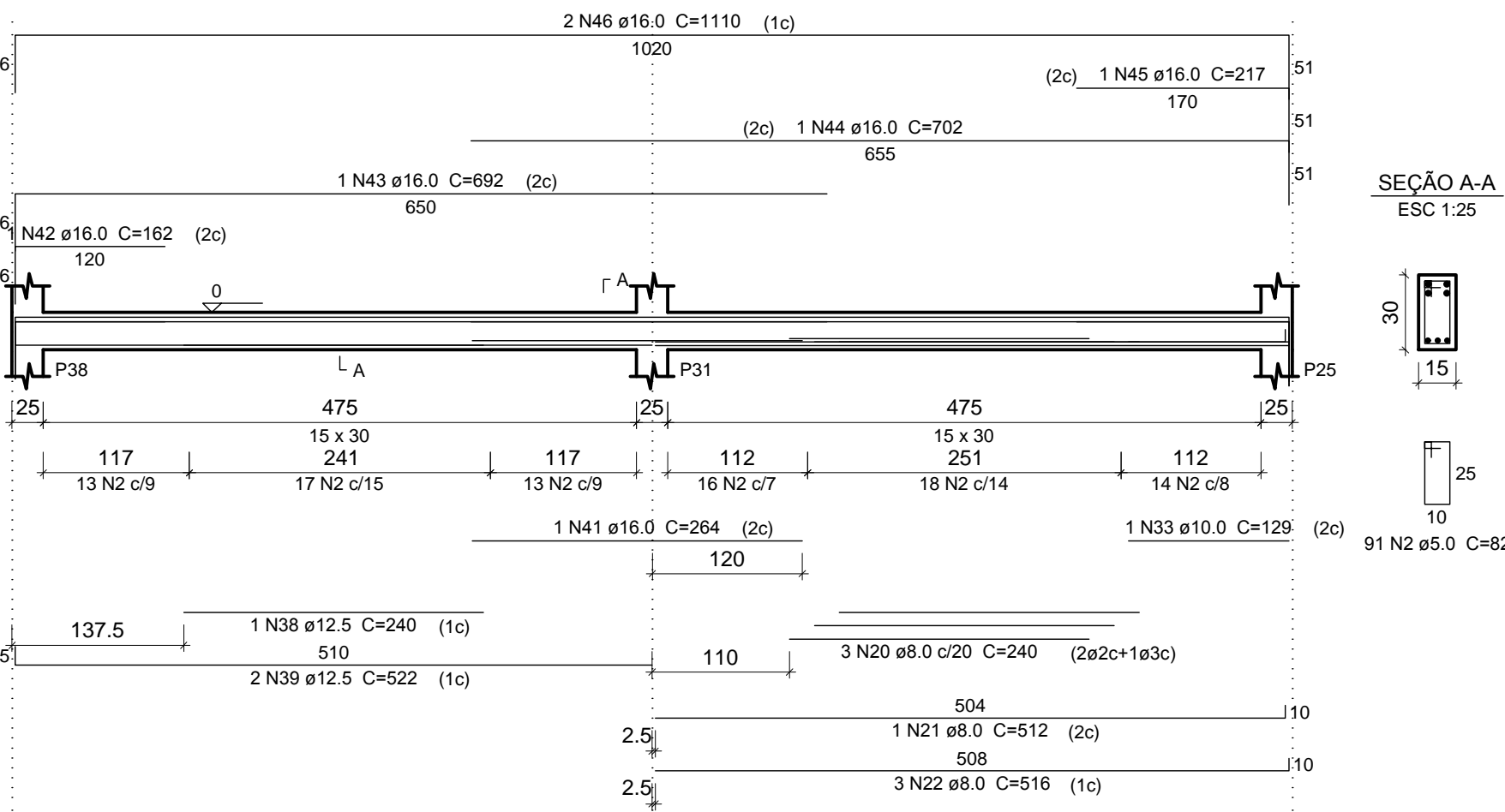
### V32 (15 x 30)

ESC 1:50



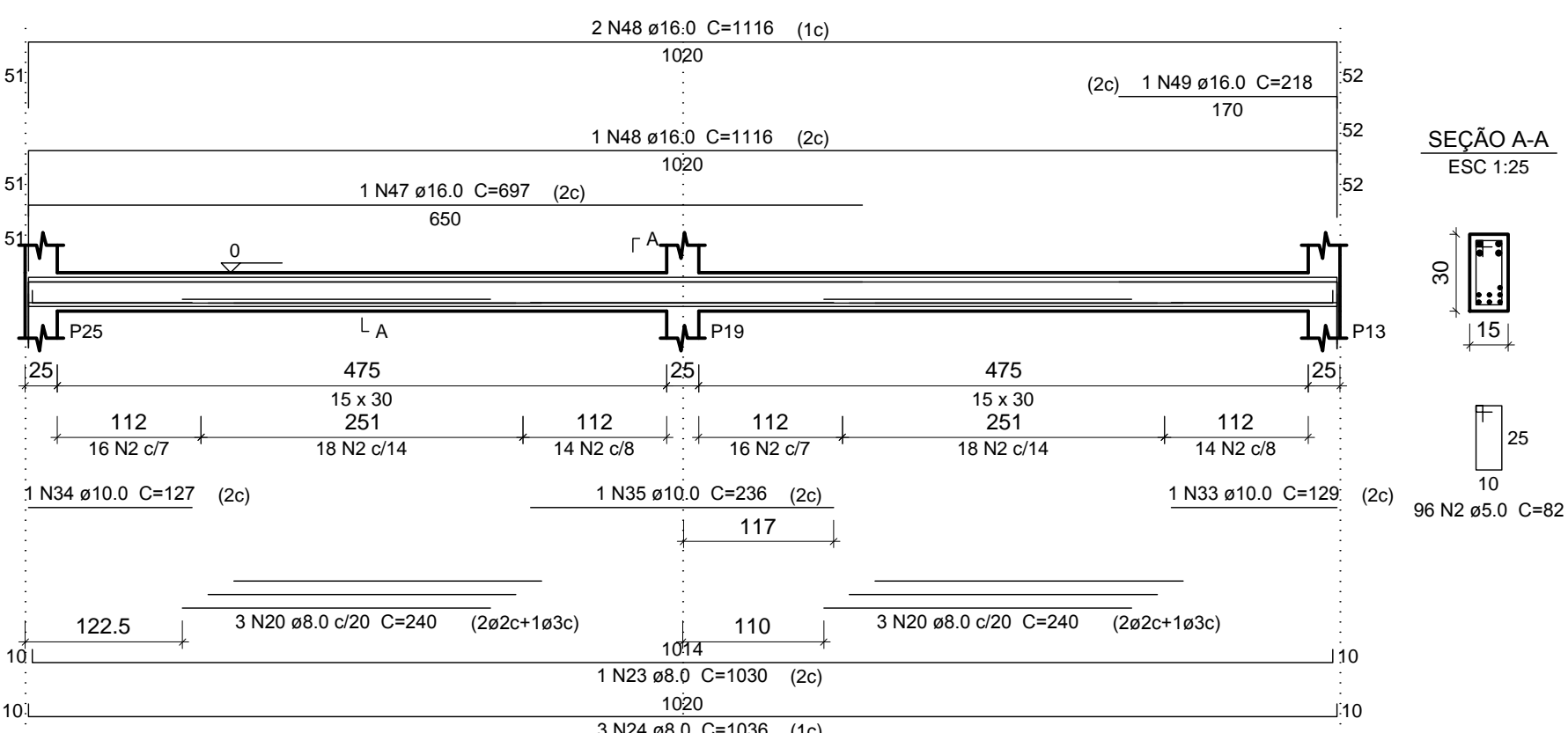
### V33 (15 x 30)

ESC 1:50



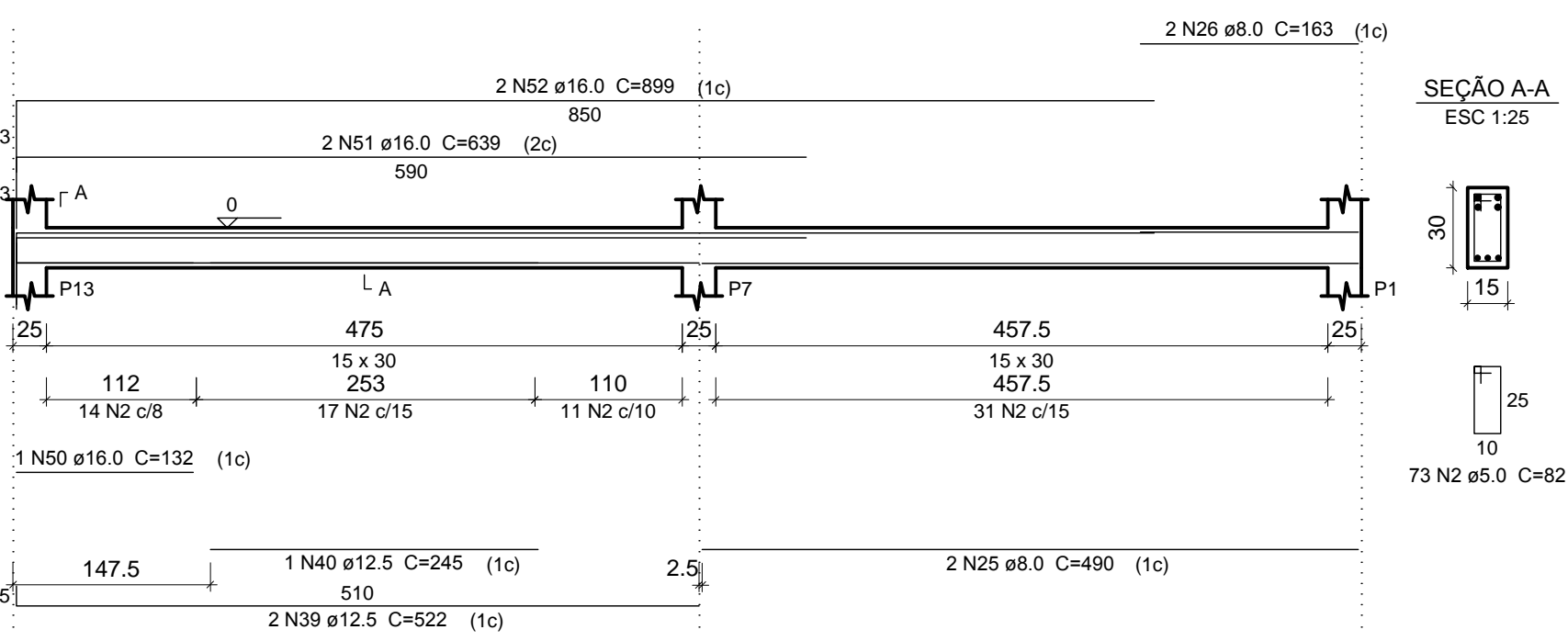
### V34 (15 x 30)

ESC 1:50



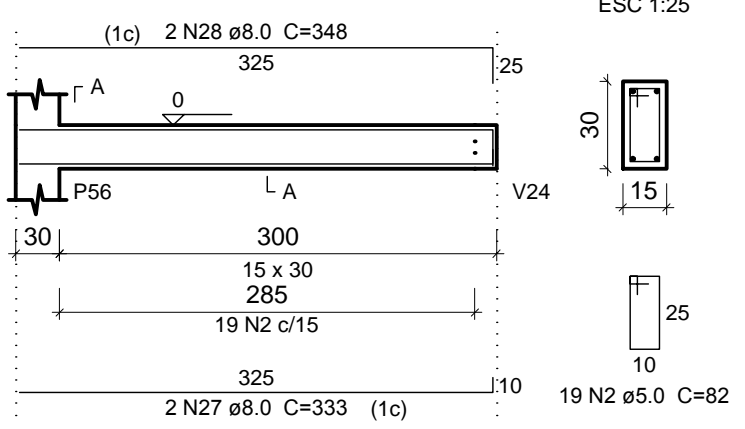
### V35 (15 x 30)

ESC 1:50



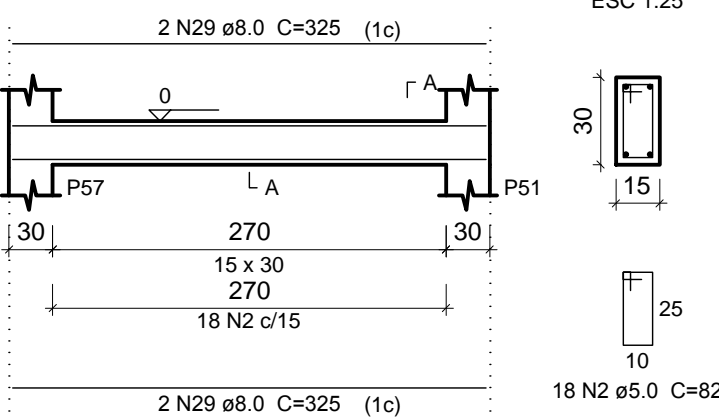
### V36 (15 x 30)

ESC 1:50



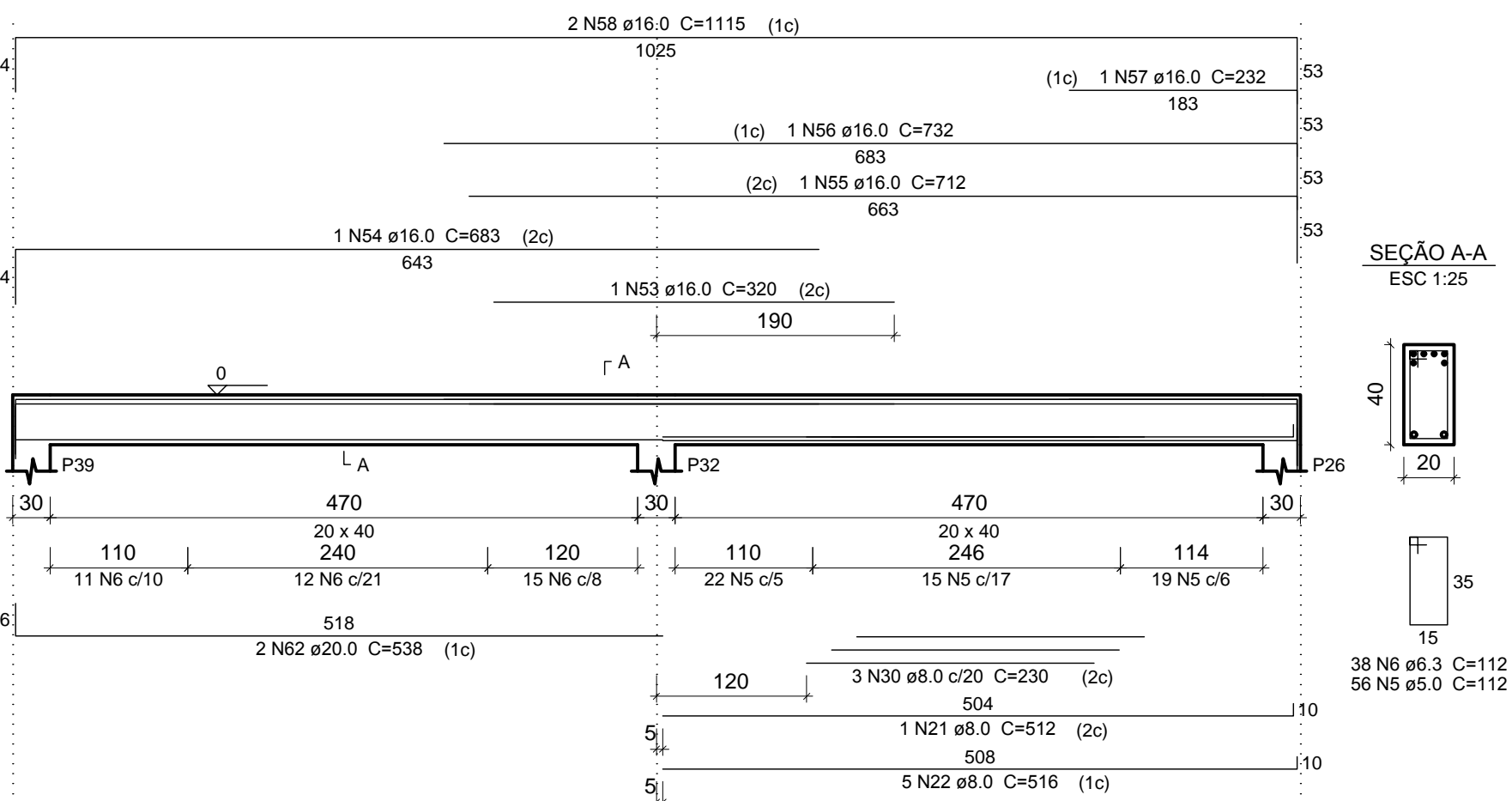
### V37 (15 x 30)

ESC 1:50



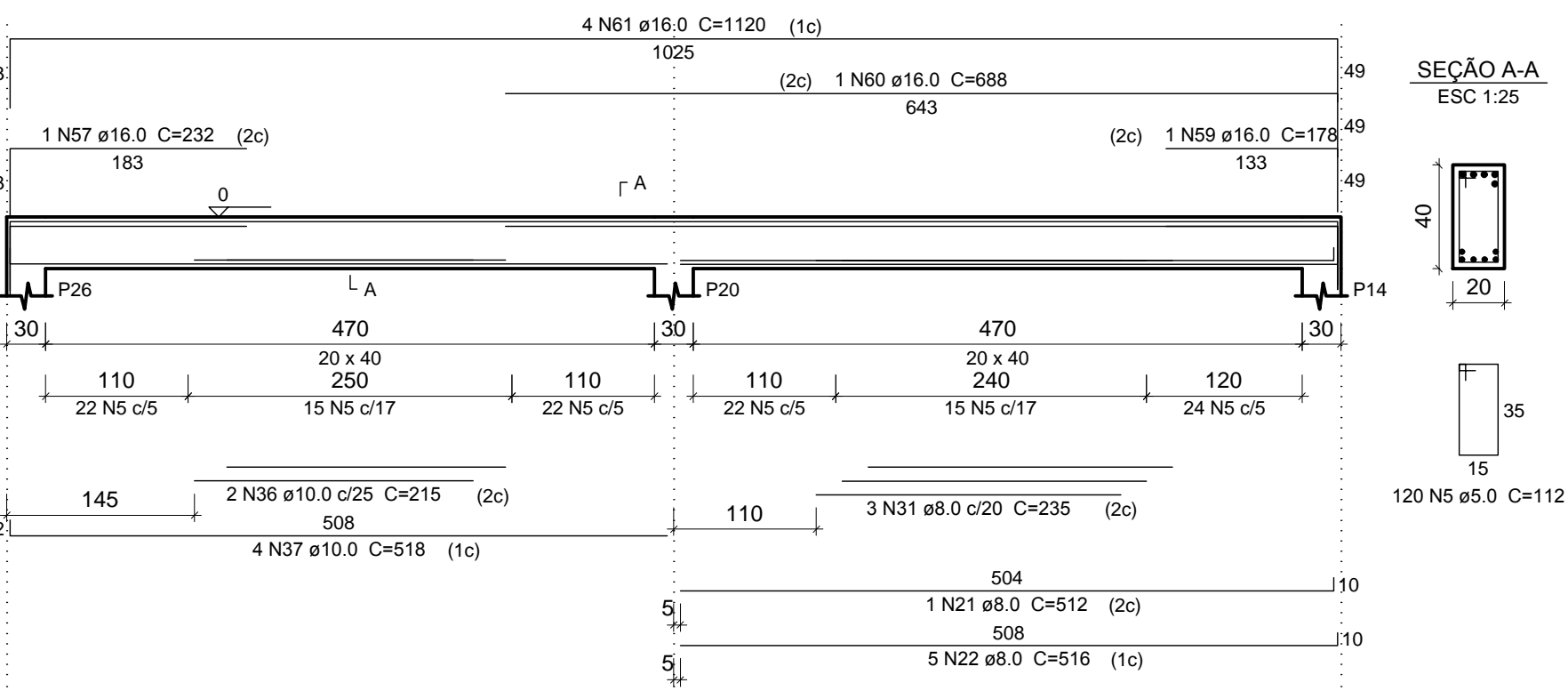
### V38 (20 x 40)

ESC 1:50



### V39 (20 x 40)

ESC 1:50



### Relação do aço

AÇO	N	DIAM (mm)	QUANT	C.UNIT (cm)	C.TOTAL (cm)
CA60	1	5.0	56	92	5152
	2	5.0	470	82	38540
	3	5.0	2	228	456
	4	5.0	2	220	440
	5	5.0	176	112	19712
	6	6.3	38	112	4256
	7	8.0	1	239	239
	8	8.0	4	905	3620
	9	8.0	4	775	3100
	10	8.0	2	513	1026
CA50	11	8.0	1	100	100
	12	8.0	2	155	310
	13	8.0	8	520	4160
	14	8.0	2	168	336
	15	8.0	3	95	285
	16	8.0	2	160	320
	17	8.0	1	120	120
	18	8.0	1	123	123
	19	8.0	2	536	1072
	20	8.0	9	240	2160
CA60	21	8.0	3	512	1536
	22	8.0	13	516	6708
	23	8.0	1	1030	1030
	24	8.0	3	1036	3108
	25	8.0	2	490	980
	26	8.0	2	163	326
	27	8.0	2	333	666
	28	8.0	2	348	696
	29	8.0	4	325	1300
	30	8.0	3	230	690
CA60	31	8.0	3	235	705
	32	10.0	2	180	360
	33	10.0	2	129	258
	34	10.0	1	127	127
	35	10.0	1	236	236
	36	10.0	2	215	430
	37	10.0	4	518	2072
	38	12.5	1	240	240
	39	12.5	4	522	2088
	40	12.5	1	245	245
CA60	41	16.0	1	264	264
	42	16.0	1	162	162
	43	16.0	1	692	692
	44	16.0	1	702	702
	45	16.0	1	217	217
	46	16.0	2	1110	2220
	47	16.0	1	697	697
	48	16.0	3	1116	3348
	49	16.0	1	218	218
	50	16.0	1	132	132
CA60	51	16.0	2	639	1278
	52	16.0	2	899	1798
	53	16.0	1	320	320
	54	16.0	1	683	683
	55	16.0	1	712	712
	56	16.0	1	732	732
	57	16.0	2	232	464
	58	16.0	2	1115	2230
	59	16.0	1	178	178
	60	16.0	1	688	688
CA60	61	16.0	4	1120	4480
	62	20.0	2	538	1076

### Resumo do aço

AÇO	DIAM (mm)	C.TOTAL (m)	PESO + 10 % (kg)
CA50	6.3	42.6	11.5
	8.0	347.2	150.7
	10.0	34.9	23.6
	12.5	25.8	27.3
	16.0	222.2	385.7
CA60	5.0	643	109
	6.3	42.6	11.5

### PESO TOTAL

AÇO	PESO TOTAL (kg)
CA50	627.9
CA60	109

Volume de concreto (C-30) = 5,16 m³  
Área de forma = 77,31 m²

### PREFEITURA MUNICIPAL DE SÃO JOÃO DO PARAÍSO/MG



OBRA/SERVIÇO:	MERCADO MUNICIPAL
PROPRIETÁRIO:	PREFEITURA MUNICIPAL DE SÃO JOÃO DO PARAÍSO/MG
CNPJ:	24.791.154/0001-07
ENDEREÇO:	PRAÇA DO MERCADO S/Nº - SEDE DO MUNICÍPIO - SÃO JOÃO DO PARAÍSO/MG
PROJETO:	PROJETO ESTRUTURAL
RESPONSÁVEL TÉCNICO:	MÔNICA CRISTINE MENDES PREFEITA MUNICIPAL
ÁREAS:	MARCOS PAULO MADUREIRA LOPES ENGENHEIRO CIVIL - CREA MG: 224.188/D
ÁREAS:	ÁREA PAVIMENTO TERREO: 1.200,00 M2 ÁREA SUB-SOLO (CONSTRUÍDA): 714,00 M2 ÁREA TOTAL EDIFICADA: 1.348,74 M2 ÁREA TOTAL (INCLUSO PILOTIS) = 1.914,00 M2
DATA:	MARÇO/2020
CONTEÚDO:	VIGAS NÍVEL MERCADO
RRT Nº:	PROPOSTA Nº:
ESCALA:	INDICADA